

STANDARD RULES	USEFUL INFORMATION	COMMUNICATION LINKS	VESSELS MANDATORY REPORTING
<p><u>LIMITS OF TARANTO VTS AREA</u></p> <p>TARANTO VTS AREA is composed by the following geographical points defined by nautical chart nr° 27 Datum WGS84:</p> <ol style="list-style-type: none"> 1. Lat. 40° 19'.8 N - Long. 017° 24'.1 E 2. Lat. 40° 13'.0 N - Long. 017° 10'.0 E 3. Lat. 40° 20'.0 N - Long. 016° 58'.0 E 4. Lat. 40° 28'.4 N - Long. 016° 57'.1 E <p><u>PRECAUTION AREA</u></p> <p>It's the area in which the first contact between TARANTO VTS Control Centre and ships MUST BE ESTABLISHED. It has a radius of 3 N.M. from <u>TARANTO VTS AREA</u>.</p> <p>Who have to comply VTS DIRECTIVES :</p> <ul style="list-style-type: none"> - Passenger ships of all tonnage; - Cargo vessels of 300 G.T. or more - Fishing boats of 24 metres or more - Recreational units (ships of 45 metres or more) <p>Who is excluded from VTS directives but can request VTS services:</p> <ul style="list-style-type: none"> Cargo vessels (less than 300 G.T.) Fishing boats, (less than 24 metres) warships and their auxiliary units. Governmental ships; Every unit without mechanical propulsion; Wooden handcraft boats and primitive construction unit. Boats and Yacht. <p>However, every unit which enters in Taranto Port must contact Taranto Harbour Master 3 Miles before Taranto break-waters and give any information necessary to local maritime authority.</p>	<p><u>PORT SERVICES</u></p> <p>The pilotage service is compulsory in TARANTO PORT and Roadstead. It's not compulsory for the following Unit:</p> <ul style="list-style-type: none"> - Warships; - All ships under 500 G.T.; - Fishing boats excluded atlantic fishing boats; - Tugs and other Unit used in port services and in local traffic. <p>Ships over 2000 G.T., may request pilotage assistance on VHF channel (If Master speaks Italian language and without tug service).</p> <p>Every vessel which move along the same berth without help of their engine and/or tugs doesn't request pilotage service. if weather conditions require, Taranto Harbour Master may order pilot on board.</p> <p>The Vessel which ENTERS IN TARANTO PORT (MAR GRANDE SIDE AND "PUNTA RONDINELLA" WEST BERTHS) and needs pilot on board, she must embark him 1 NM from the conjunction line between San Vito light and San Paolo red light or 2 NM first that limit if vessel has 16 mts of draught or more.</p> <p>The Vessel which LEAVES TARANTO PORT (MAR GRANDE SIDE AND "PUNTA RONDINELLA" WEST BERTHS) and needs pilotage services must disembark him crossing Taranto's breakwater when she has less of 16 mts of draught or 1 NM after that limit if she has 16 mts of draught or more.</p> <p>Taranto Harbour Master may orders pilot on board when there is bad weather, for Port's safety or because there are a great movement of vessels in Port.</p> <p>Tugs service is available in Taranto Port and it's defined by rule n.153/03 dated 27.06.2003: Vessels which has 20.000 G.T. (or more) and has particular cargo on board must request it. Vessels which has 2.000 G.T. (or more) and has dangerous goods on board must request it.</p> <p>Berthing and unberthing service is available in Taranto Port and it's defined by rule nr 08/2004 dated 23.01.2004.:</p>	<p><u>RADIO CONTACTS</u></p> <p>The VHF-FM channels in TARANTO VTS AREA are:</p> <p><u>Primary Working Channel:</u> CH- 13 - (156.650 Mhz) to be used into: -Precaution area -VTS AREA -Taranto Port Anchor area It must been used by vessels directs to "Molo Polisettoriale" "Quinto Sporgente" "Calata 5"</p> <p><u>Secondary Woking Channel:</u> CH. 73 (156.675 Mhz). Working channel between Port services (Pilots, tugs, berthing personnel, maritime advisor).</p> <p><u>Calling frequency:</u> CH -16 - (156.800 Mhz) Emergency and Safety channels Taranto VTS Centre keep watching on channels: 16 - 13 twenty-four hours by day. Call sign in use is "VTS TARANTO".</p> <p><u>PHONE ,FAX, E-MAIL</u> TARANTO VTS AREA can be contacted twenty-four hours by day at the following telephone numbers too: +39-099/4713611 Fax: +39.099/4718288 Email: taranto@guardiacostiera.it Address: Capitaneria di Porto-Taranto Largo Arcivescovado n. 17 74100 TARANTO-ITALIA transmitted whit fax or email (+39.099/4718288 - taranto@guardiacostiera.it).</p>	<p>MANDATORY REPORTING FOR VESSELS IN TRANSIT :</p> <p>Vessels in transit and included into VTS directives must contact <u>TARANTO VTS CENTRE</u> when they are into precaution area. At the first contact, vessels in transit must inform TARANTO VTS about notices required by "CLASS A message format, normative in vigor (VTS 005 REV.1). The above mentioned units must contact <u>TARANTO VTS CENTRE</u> when they leave this area too. They must inform about information request by CLASS B message format, normative in vigor (VTS 005 REV.1).</p> <p>MANDATORY REPORTING FOR VESSELS WHICH ENTER IN THE PORT OF TARANTO. At the first contact, vessels must inform TARANTO VTS about notices required by "CLASS A message format, normative in vigor (VTS 005 REV.1). If vessels give anchor in Taranto's anchor area, it's required "CLASS C message format, normative in vigor (VTS 005 REV.1). If vessels is at berth she must compose "CLASS D message format, normative in vigor (VTS 005 REV.1).</p> <ul style="list-style-type: none"> - First contact: When unit is in the Precautionary Area. (Class A message format) - <i>Second contact</i> : to be made at "Pilot embarking point" (Second contact must to be made if pilot isn't on board or this service aren't necessary too. - <i>Third contact</i> when unit is at the berth (Class D message format) or at anchor in Taranto's anchor area (Class C message format). <p>MANDATORY REPORTING FOR VESSELS WHICH LEAVE THE PORT OF TARANTO FROM BERTH OR ANCHOR POINT:</p> <p>At the first contact, vessels must inform TARANTO VTS about notices required by "CLASS E message format, normative in vigor (VTS 005 REV.1). When unit leaves <u>TARANTO VTS AREA</u> she must inform TARANTO VTS about notices required by "CLASS F message format, normative in vigor (VTS 005 REV.1).</p> <ul style="list-style-type: none"> - First call: one hour before estimated departure. - Second call: It's necessary to obtain permission to leave the Port of Taranto. It's request by pilot on board or by master (if pilot isn't on board). - Third call: When unit is at the entrance of the outgoing traffic lane and pilot is disembarking. - Fourth call : When unit leaves <u>TARANTO VTS AREA</u>. <p>If information required by VTS TARANTO is considered confidential in accordance with the "ship security plan" of the vessel, it can be</p>

	Service
<p style="text-align: center;">TARANTO ANCHORAGE POINTS</p> <p>The following anchorage points are disciplined by Taranto harbour Master whit Decree nr° 31/1996 .</p> <p>Anchor points and berthing buoys: Warships and merchant vessels must anchor at points and buoys indicated on nautical charts. Buoys identified as letters A,B,C, can be only used by navy warships. Two anchor areas are available in Mar Grande. They are defined by nautical chart nr° 148 Datum WGS84. The sea bed is muddy , holds fairly; anchorage is safe whit all weather conditions. However, merchant vessels without cargo on board and whit high structured platforms must verify weather conditions frequently because they can dragging. Generally, vessels which carry dangerous goods may anchor in "Mar Grande anchor area" at south of parallel that across " Secca della Sirena". If anchor area is empty by vessels and weather condition is good, all vessels which have order to berth to "Molo Polisettoriale", "V Sporgente" and "Banchina Bellelli" may anchor into the area designed in front to "V° Sporgente's break-wather" as defined on nautical chart nr. 148 Datum WGS84 Fishing is prohibited into anchor area.</p> <p>The anchor area as definited on annex 3 (yellow color) end Portolano Pubblicacion (VOI. P5).</p> <p style="text-align: center;"><u>prohibited areas</u></p> <p><i>If a vessel moors to Y9, Y10, Y11 points and uses Navy's buoys A,B,C (as defined on Portolano Pubblicacion VOI. P5) must request authorization to Taranto Harbour Master and it's necessary clearance by Taranto Navy Department Commander.</i> Anchoring, fishing and other sea activity is prohibited into traffic line. It's prohibited anchor to vessels carrying dangerous goods out of port area and in front to Capo S.Vito break-waters. Every vessel carrying dangerous goods in bulk in liquid or gas state and/or polluting cargo (also after their disembark) cannot transit into Taranto harbour master sea area included from coast to six miles toward see. <i>Fire Operation area:</i> It's prohibited Transit into this area located from Capo San Vito to 2,5 Mn direction South east every time there are fire operations flags (two red flag during day time and two red lights during night).</p> <p><u>Isles of Chéradi (S.Pietro and S.Paolo)</u> Anchoring and stopping is forbidden in the following areas of water (order nr. 52/03)</p> <ul style="list-style-type: none"> -Sea area (wide 100 mts) around Mar Grande breakwaters. -Sea area (wide 100 mts) around breakwaters situated to west of "Punta Rondinella" -Sea area (wide 200 mts) around S.Pietro and S.Paolo' Islands and break water between these military areas; It's forbidden transit to each unit, swimming or/and diving without authorization from the "Taranto NAVY DEPARTEMENT Commander" (Capo del Dipartimento Militare Marittimo di Taranto). - Sea zone wide 300 mts in front to area between S.Vito lighthouse and the fire fighting's zone of "Centro Addestramento Areonavale M.M.) - Sea zone wide 300 mts around buoys reserved to Italian War Ship; - Sea area near two entrances of Mar Grande situated to: <ol style="list-style-type: none"> 1) S.Paolo's island and "Capo San Vito" 2) Along Mar Grande break water (named "Punta Rondinella" or Bocca del Diavolo); - Sea area near entrance of "Porto Mercantile" and fair line to piers. <p>In these areas is forbidden to obstruct the passage of vessels entering and leaving port. It's forbidden anchor in Taranto Anchor Area to each unit approach at less than 300 meters for war ships of any nationality without authorization from the "Taranto NAVY DEPARTEMENT Commander" (Capo del Dipartimento Militare Marittimo di Taranto). It's forbidden swimming, diving, fishing at less than 400 meters for war ships of any nationality anchored in Taranto Anchor Area or berthed at Merchant, Industrial or Military Port without authorization from the "Taranto NAVY DEPARTEMENT Commander" (Capo del Dipartimento Militare Marittimo di Taranto).</p>	<p>Additional services provided by TARANTO VTS Centre:</p> <ul style="list-style-type: none"> - Traffic information Service - Navigation Assistance Service - Traffic Organization Service <p><u>TRAFFIC INFORMATION SERVICE</u> TARANTO VTS Centre informs about safety every unit in its area. in particular, are guaranteed the following services:</p> <ul style="list-style-type: none"> - Navigational warnings to vessel during transit, arrive and departure to Taranto VTS AREA (detailed ship's position, name, course; preferably using bearing and distance from contact). - other vessels transiting , arriving or selling from VTS AREA - possible presence of Fishing boats in the area; - possible presence in the AREA of vessels excluded from VTS directives - gale warning - possible presence of units supplying water for extinguishing fires. - information about fire fighting's operations; - possible presence of religious and/or sport events; - vessels incoming and outgoing the Port - Vessels with limited ability to maneuver; - Convoys, tugs and other port services units. - Search and Rescue OR /ANTI -Pollution operations in course in the VTS area; - Units conducting sea trials inside the vts area - Danger warnings relevant to navigational safety; - vessels at anchor or refuelling; - faults connected to maritime signals/lights in the vts area <p><u>NAVIGATIONAL ASSISTANCE SERVICE</u> The service is provided:</p> <ul style="list-style-type: none"> - on request, and prior inability to manuevering operations/faults, inconveniency - vessels with limited ability to maneuver because of technical problems and accidents - During danger warning for safety and security; - Every time is necessary save human life at sea. <p>During assistance, Taranto VTS Centre gives information about course, speed, position, notices about other vessels in zone and take decisions in concert With master.</p> <p><u>TRAFFIC ORGANIZATION SERVICE</u> This service prevents danger studying a vessel traffic plain into TARANTO VTS AREA.</p> <div style="border: 1px solid black; padding: 5px; text-align: center; margin: 10px 0;">FIXED ROUTES</div> <p>They are two traffic lines used by vessels to enter and exit from Taranto Port Area as defined by Decree n.31/96 dated 28 feb 1996: They are named respectively "Canale est" and "Canale ovest" as detailed in nautical chart nr. 148 Datum WGS84. Traffic Separation scheme begins 3 nautical miles from light Capo S.Vito and red light S.Paolo isle and is developed on a separation line based on the axis 60° - 240°. The EAST channel is 350 mts wide ,only for entry purpose</p>

Mar Grande

Anchoring and stopping is forbidden in the following areas:

- **Areas** having a width of 100nm inside and outside the Mar Grande and Punta Rondinella West side breakwaters;
- **Areas** having a width of 200 nm outside and alongside Eni buoys area and along pipe between these area and Eni refinery;
- Military port of "Italian Military Navy Chief petty officer' school".
- S.Pietro e S.Paolo' Isles and their breakwater . It's forbidden swimming, diving, fishing at less than 200 meters of San Pietro and San Paolo. It's forbidden transit without authorization from the "Taranto NAVY DEPARTEMENT Commander" (Capo del Dipartimento Militare Marittimo di Taranto).
- **Areas** having a width of 300 nm in front of Taranto Harbour Master
- **Areas** having a width of 300 nm around Military buoys.
- **Sea zone wide 400 mts** in front of "Pontile Chiapparo" used by Italian Navy.
- **Anchoring and transit of all vessels, boats, Floatings** is forbidden along the two access routes to MAR GRANDE (S.Pietro isle and capo S.Vito and the barrier of Punta Rondinella) ,fairway to the navigation CHANNEL.
(swimmers ,sub divers and under water operators are forbidden in areas wide 400m outside quay of **Chiapparo near the Navy station**) .
- **(swimmers, sub divers, under water operators are forbidden** to approach **less than 400 mts from navy war ships**, and from all vessels anchored in Mar Grande and Mar Piccolo or berthed in merchant ,industrial and military harbour piers,)

MARITIME SIGNALS

Verify frequently the last edition of THE LIST OF SIGNALS AND LIGHTS

The WEST channel, is 300 mts wide, only for exit purpose

The two channels are separated by a sea beam of 50 mts wide to enable vessels entry and exit movement .

Vessels which leave or enter in Taranto port must use these traffic lines. Vessels with more than 16 mts of draught have earlier on other vessels for entry in TARANTO PORT.

The access to "V° Sporgente", "Banchina Belleli" and "Molo Polisettoriale" is authorized using the traffic line limited by the green light breakwater and the red light of downwave barrier.

SECURITY

ISPS Code

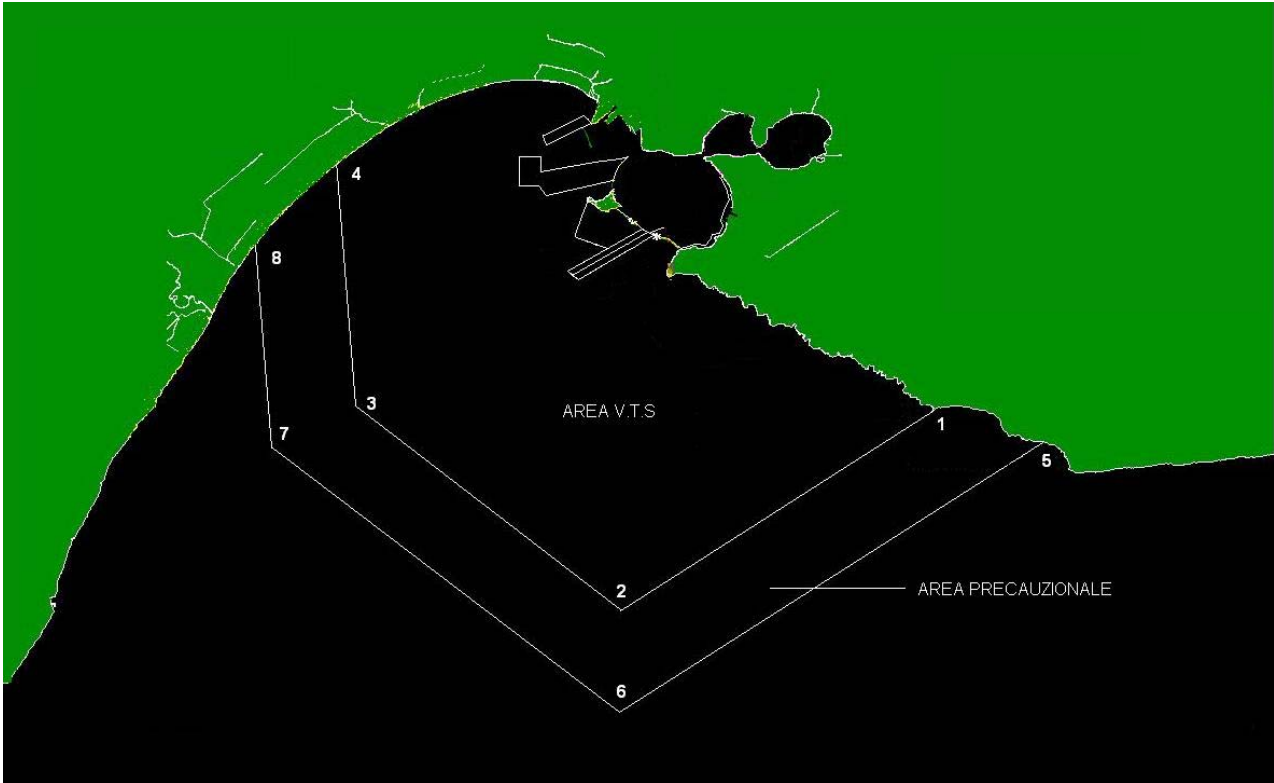
It's compulsory in TARANTO PORT as defined by rule 158/2004.

24 hrs before their arrive to Taranto Port, Vessels subject to the ISPS regulations must send fax " *Ship Pre-Arrival Security Information Form*" to Taranto Harbour Master.

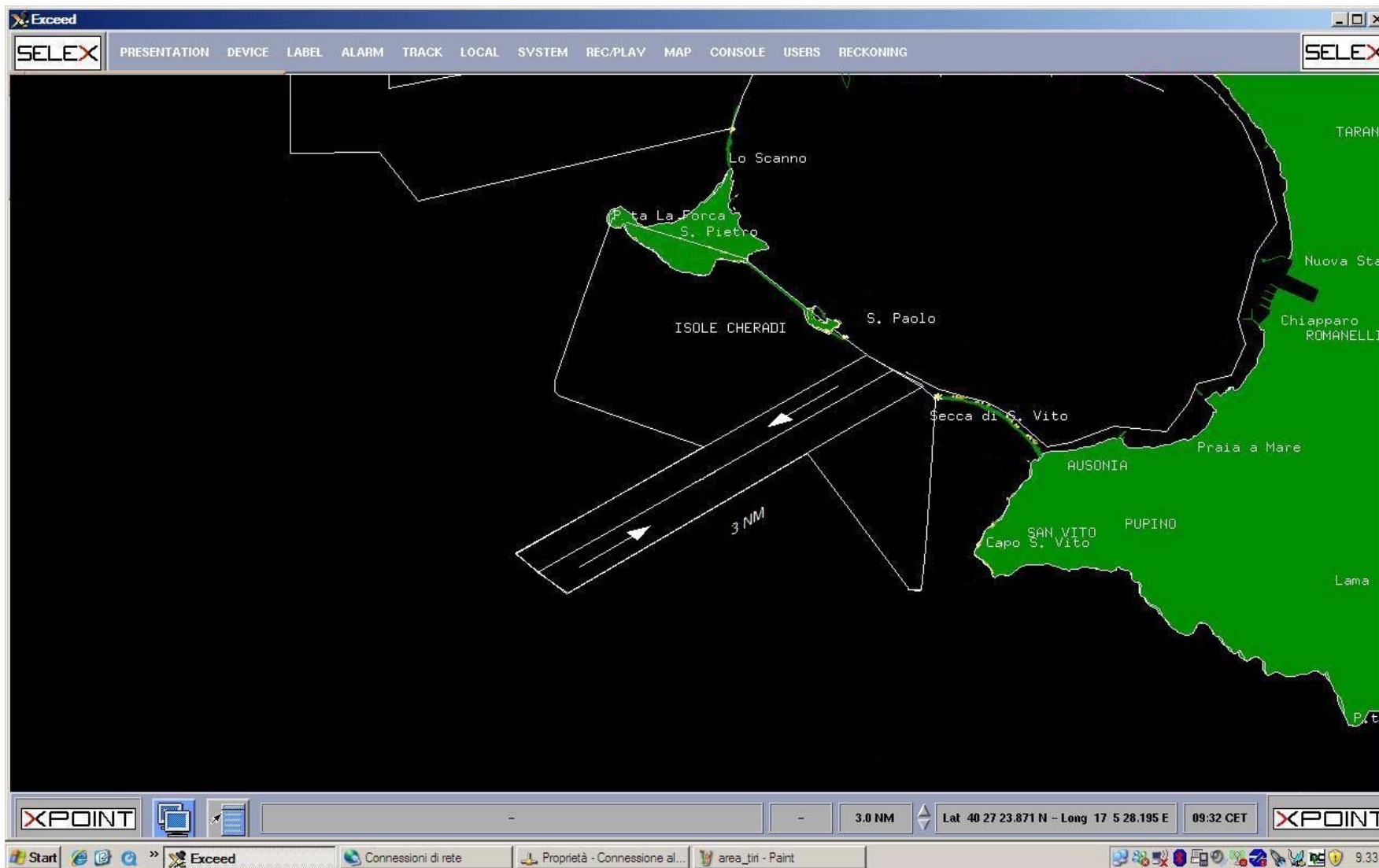
Decree n°309/2009:

The Vessel which ENTERS IN TARANTO PORT for a superior period to 1 hour, when stopped the anchor operation, must to disarm the A.I.S. (*Automatic Identification System*) end reactivate 30 minutes before estimated departure.

ANNEX 1 – AREA VTS TARANTO



ANNEX 2 SCHEMA DI SEPARAZIONE DEL TRAFFICO



ANNEX 3 –NAUTICAL CHART N°148 Datum WGS84

